

Town of Braselton 2,000 Gallon Grease Interceptor

MODEL: 110-02000

PRODUCT INFORMATION

2,000 GALLON
GREASE INTERCEPTOR

TANK= 21,000 #
LID= 5,900 # BARTOW PRECAST
DESIGN MAY VARY

SPECIFICATIONS

MEETS ASTM C 1613

RATING: A-16 (H-20), ASSUME
4" MAX EARTH COVER WITH 3"
WATER TABLE BELOW GRADE

CONCRETE: 5,000 PSI @ 28 DAYS

STEEL REINFORCEMENT: MEETS
ASTM A 615, PLACEMENT AS
REQUIRED BY DESIGN

INLET & OUTLET BOOT MEETS
ASTM C 923, ACCEPTS 4" & 6" PVC

BUTYL SEALANT: MEETS ASTM
C 900, USED ON JOINTS

ACCESS OPENING SUITABLE FOR
24" RISER AND/OR RING & COVER
INTERNAL PIPING BY OTHERS
PER MUNICIPAL SPECS

MODIFICATION TO THIS DESIGN
AVAILABLE UPON REQUEST

CALL FOR ADDITIONAL SPECS



NPCCP
CERTIFIED PLANT

DRAWING INFORMATION

Drawn By: JJG

Checked By: 1

Revision: 1

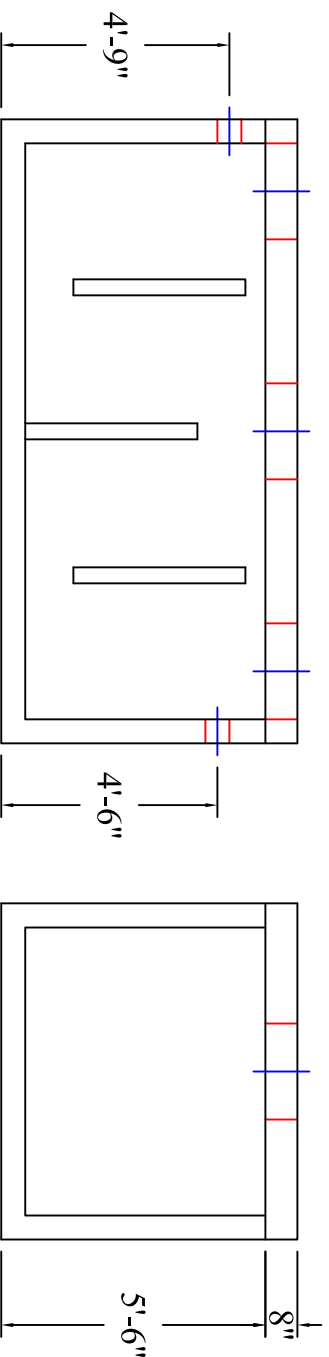
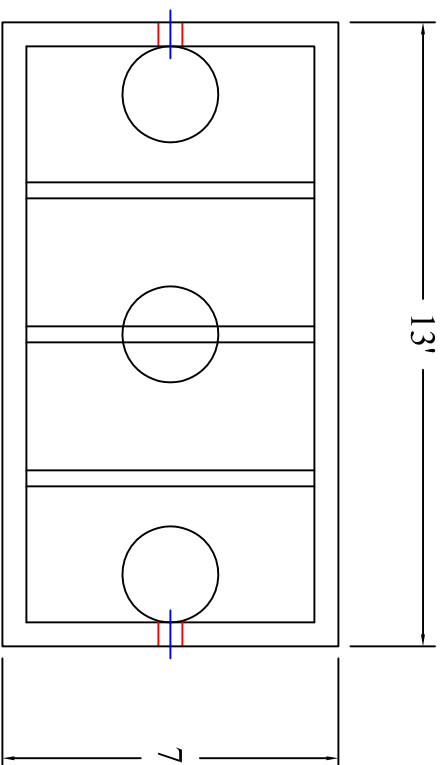
Date: 12/12/16

APPROVED BY:

print: _____

sign: _____

*actual dimensions may vary slightly



Scale: 1/4" = 1'



**BARTOW
PRECAST**

770.382.4462
sales@bartowprecast.com
WWW.BARTOWPRECAST.COM