

Etowah Water & Sewer Authority 3,000 Gallon Grease Interceptor

MODEL: GI 3000/384

PRODUCT INFORMATION

3,000 GALLON
GREASE INTERCEPTOR

TANK= 22,300 # (L/W)
LID= 10,400 # BAFFILES= 1,700# (ca.)
DESIGN MAY VARY

SPECIFICATIONS

MEETS ASTM C 1613

RATING: A-16 (H-20), ASSUME
4" MAX EARTH COVER WITH 3'
WATER TABLE BELOW GRADE

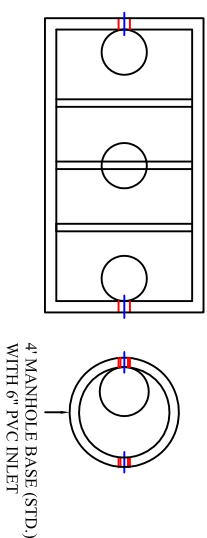
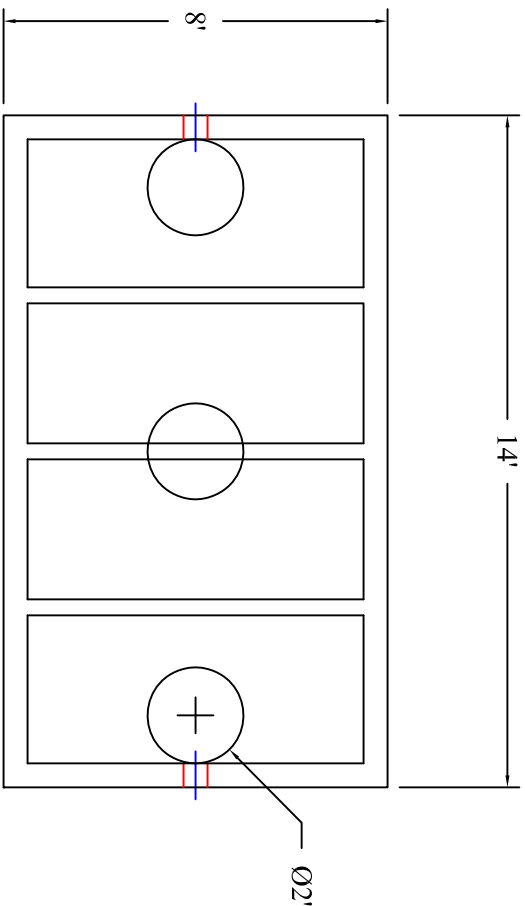
CONCRETE: 5,000 PSI @ 28 DAYS

STEEL REINFORCEMENT: MEETS
ASTM A 615, PLACEMENT AS
REQUIRED BY DESIGN

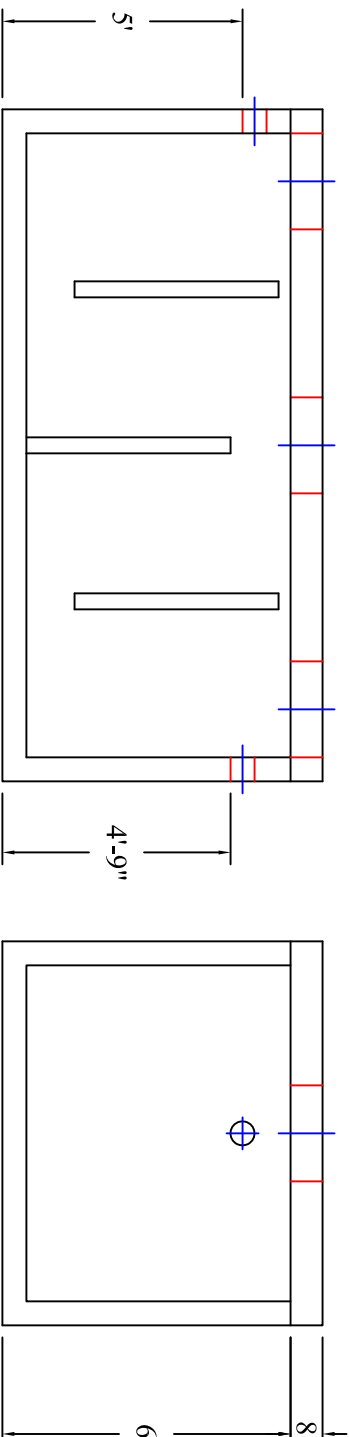
INLET & OUTLET BOOT MEETS
ASTM C 923, ACCEPTS 4" & 6" PVC

BUTYL SEALANT: MEETS ASTM
C 900, USED ON JOINTS

ACCESS OPENING SUITABLE FOR
24" RISER AND/OR RING & COVER
INTERNAL PIPING BY OTHERS
PER MUNICIPAL SPECS



PLAN VIEW with 4' MANHOLE



Scale: 1/4" = 1'



**BARTOW
PRECAST**

770.382.4462
sales@bartowprecast.com
WWW.BARTOWPRECAST.COM



DRAWING INFORMATION

Drawn By: CBC
Checked By: 1
Revision: 1/2/17
Date: 1/2/17

APPROVED BY: _____

print: _____

sign: _____

*actual dimensions may vary slightly