

# Fulton County 3,000 Gallon Grease Interceptor

MODEL: 110-03039

## PRODUCT INFORMATION

3,000 GALLON  
GREASE INTERCEPTOR

TANK= 26,400 #  
LID= 10,700 #  
DESIGN MAY VARY

## SPECIFICATIONS

MEETS ASTM C 1613

RATING: A-16 (H-20), ASSUME  
4" MAX EARTH COVER WITH 3"  
WATER TABLE BELOW GRADE

CONCRETE: 5,000 PSI @ 28 DAYS

STEEL REINFORCEMENT: MEETS  
ASTM A 615, PLACEMENT AS  
REQUIRED BY DESIGN

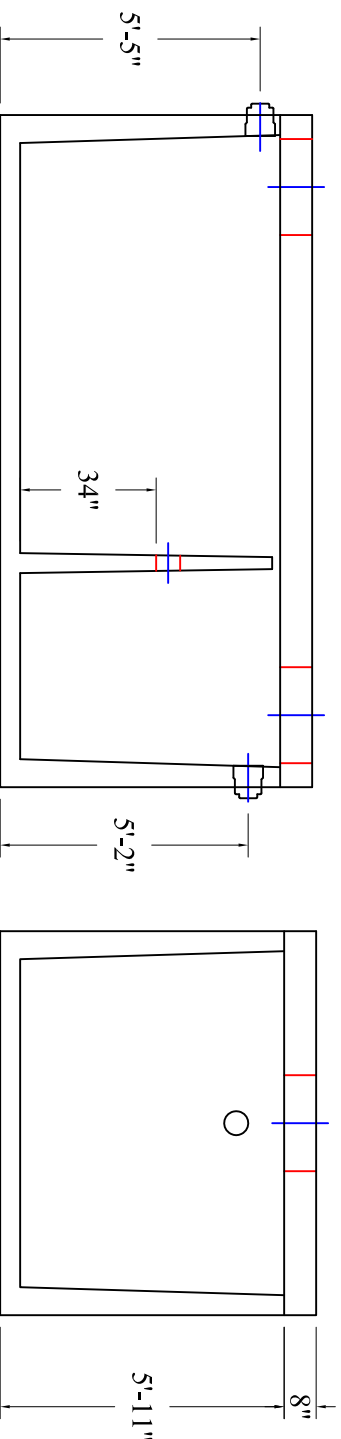
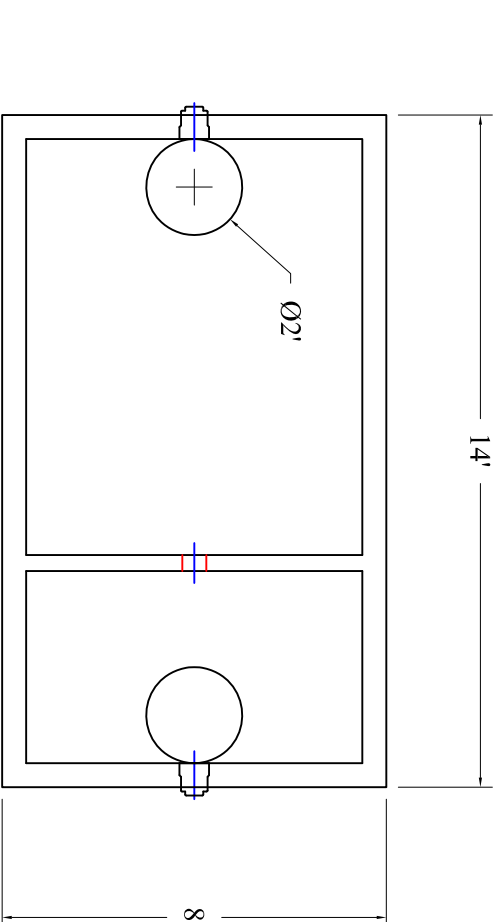
INLET & OUTLET BOOT MEETS  
ASTM C 923, ACCEPTS 4" & 6" PVC

BUTYL SEALANT: MEETS ASTM  
C 900, USED ON JOINTS

ACCESS OPENING SUITABLE FOR  
24" RISER AND/OR RING & COVER

INTERNAL PIPING BY OTHERS  
PER MUNICIPAL SPECS

BAFFLE TO BE MONOLITHIC WITH  
6" PVC CROSSOVER



Scale: 1/4" = 1'



**BARTOW  
PRECAST**

770.382.4462  
sales@bartowprecast.com  
WWW.BARTOWPRECAST.COM



## DRAWING INFORMATION

Drawn By: JJG

Checked By: 1

Date: 12/18/18

APPROVED BY:

print: \_\_\_\_\_

sign: \_\_\_\_\_

\*actual dimensions may vary slightly