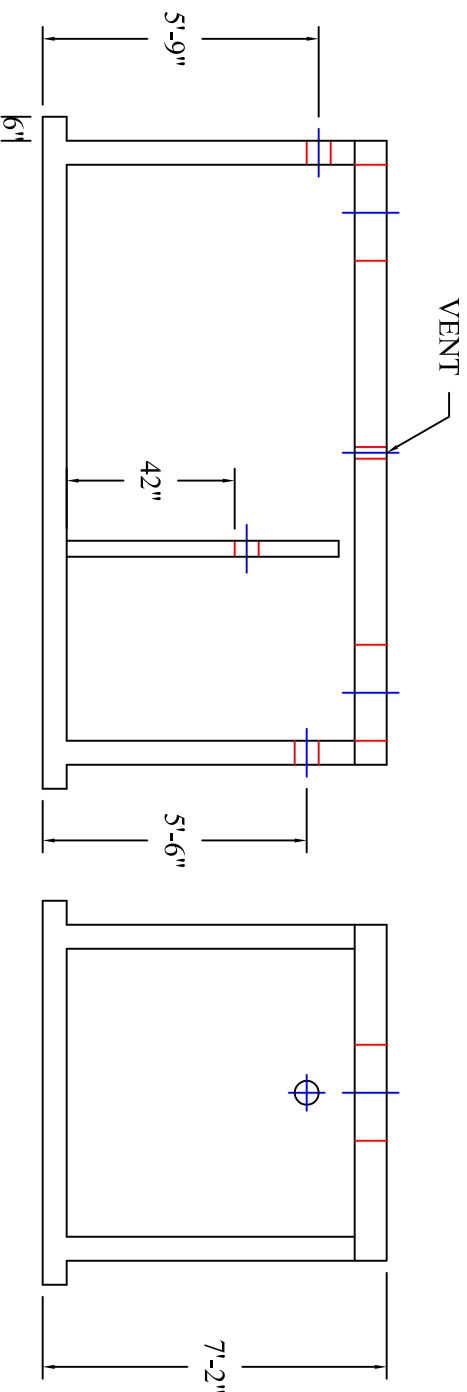
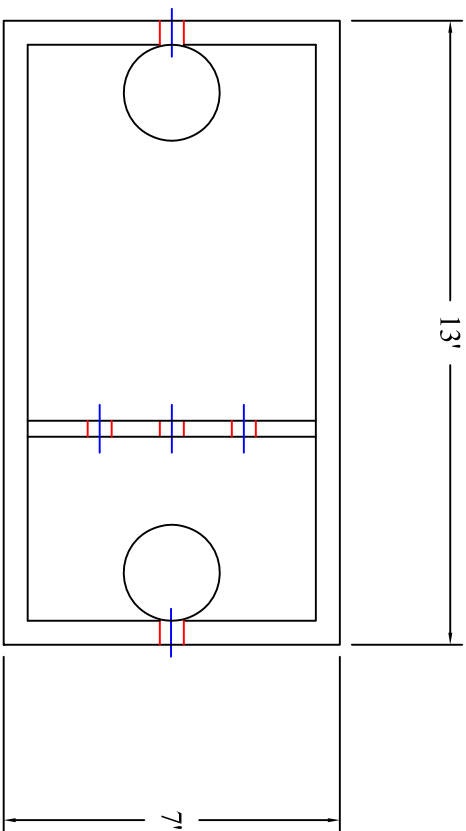


Columbia County 2,500 Gallon Grease Interceptor



MODEL: GI 2500/187

PRODUCT INFORMATION
2,500 GALLON
GREASE INTERCEPTOR

TANK= 20,700# (LW)
LID= 8,500 # BAFFLE= 1,700 #
DESIGN MAY VARY

SPECIFICATIONS
MEETS ASTM C 1613

RATING: A-16 (H-20), ASSUME
4" MAX EARTH COVER WITH 3"
WATER TABLE BELOW GRADE

CONCRETE: 5,000 PSI @ 28 DAYS

STEEL REINFORCEMENT: MEETS
ASTM A 615, PLACEMENT AS
REQUIRED BY DESIGN

INLET & OUTLET BOOT MEETS
ASTM C 923, ACCEPTS 4" & 6" PVC

BUTYL SEALANT: MEETS ASTM
C 900, USED ON JOINTS

ACCESS OPENING SUITABLE FOR
24" RISER AND/OR RING & COVER

INTERNAL PIPING BY OTHERS
PER MUNICIPAL SPECS, INCLUDE
POLYLOK PL 625 OUTLET FILTER

BAFFLE CROSSEOVERS TO BE (3)
4" PVC SLEEVES

TANK COATED WITH CONSEAL
CS-55, INTERIOR & EXTERIOR



DRAWING INFORMATION

Drawn By: JJG
Checked By: 1
Revision: 5/18/17
Date: 5/18/17

APPROVED BY: _____

print: _____

sign: _____

*actual dimensions may vary slightly



**BARTOW
PRECAST**

770.382.4462
sales@bartowprecast.com
WWW.BARTOWPRECAST.COM

Scale: 1/4" = 1'