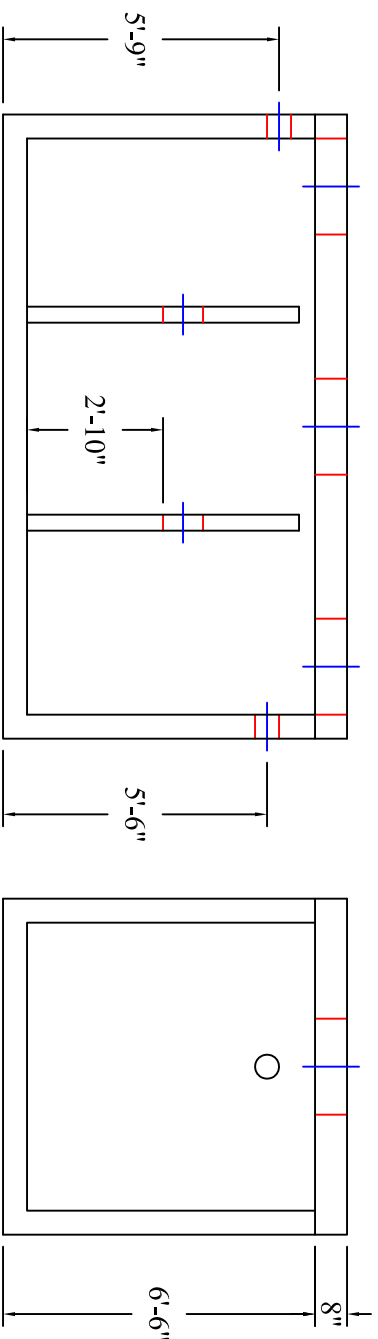
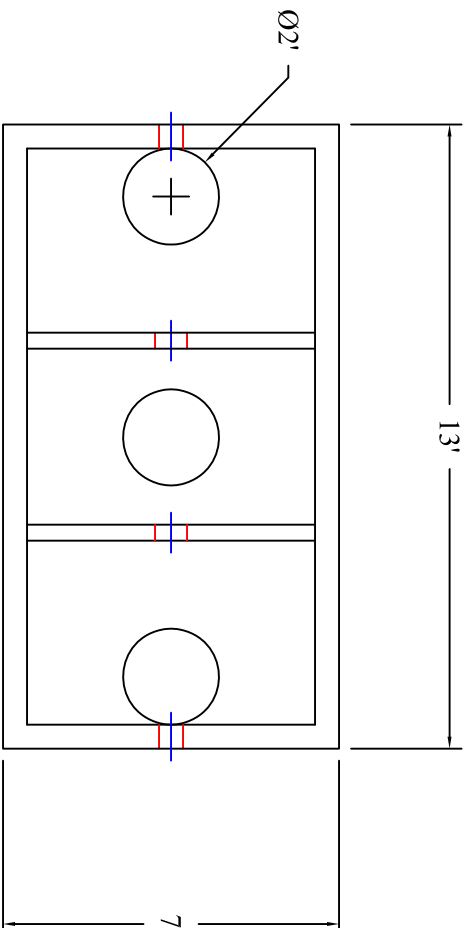


# Dekalb County 2,500 Gallon Grease Interceptor



Scale: 1/4" = 1'



**BARTOW  
PRECAST**

770.382.4462  
sales@bartowprecast.com  
WWW.BARTOWPRECAST.COM

MODEL: GI 2500/286

**PRODUCT INFORMATION**  
2,500 GALLON  
GREASE INTERCEPTOR

TANK= 20,500 # (L/W)  
LID= 8,200 # BAFFILES= 1,700# (ca.)  
DESIGN MAY VARY

**SPECIFICATIONS**  
MEETS ASTM C 1613

RATING: A-16 (H-20), ASSUME  
4" MAX EARTH COVER WITH 3'  
WATER TABLE BELOW GRADE

CONCRETE: 5,000 PSI @ 28 DAYS  
STEEL REINFORCEMENT: MEETS  
ASTM A 615, PLACEMENT AS  
REQUIRED BY DESIGN

INLET & OUTLET BOOT MEETS  
ASTM C 923, ACCEPTS 4" & 6" PVC

BUTYL SEALANT: MEETS ASTM  
C 900, USED ON JOINTS

ACCESS OPENING SUITABLE FOR  
24" RISER AND/OR RING & COVER

INTERNAL PIPING BY OTHERS  
PER MUNICIPAL SPECS

CROSSOVER TO BE 8" PVC

CALL FOR ADDITIONAL SPECS



## DRAWING INFORMATION

Drawn By: CBC  
Checked By: 1  
Revision: 1/2/17  
Date: 1/2/17

APPROVED BY: \_\_\_\_\_

print: \_\_\_\_\_

sign: \_\_\_\_\_

\*actual dimensions may vary slightly