

Fulton County 2,500 Gallon Grease Interceptor

MODEL: GI 2500/189

PRODUCT INFORMATION

2,500 GALLON
GREASE INTERCEPTOR

TANK= 22,200# (LW)
LID= 8,500 #
DESIGN MAY VARY

SPECIFICATIONS

MEETS ASTM C 1613

RATING: A-16 (H-20), ASSUME
4" MAX EARTH COVER WITH 3'
WATER TABLE BELOW GRADE

CONCRETE: 5,000 PSI @ 28 DAYS

STEEL REINFORCEMENT: MEETS
ASTM A 615, PLACEMENT AS
REQUIRED BY DESIGN

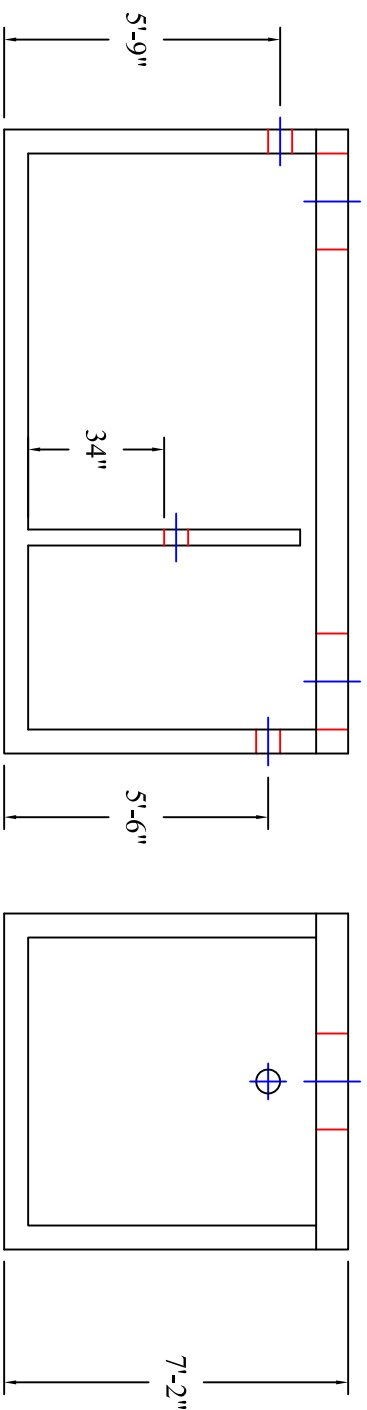
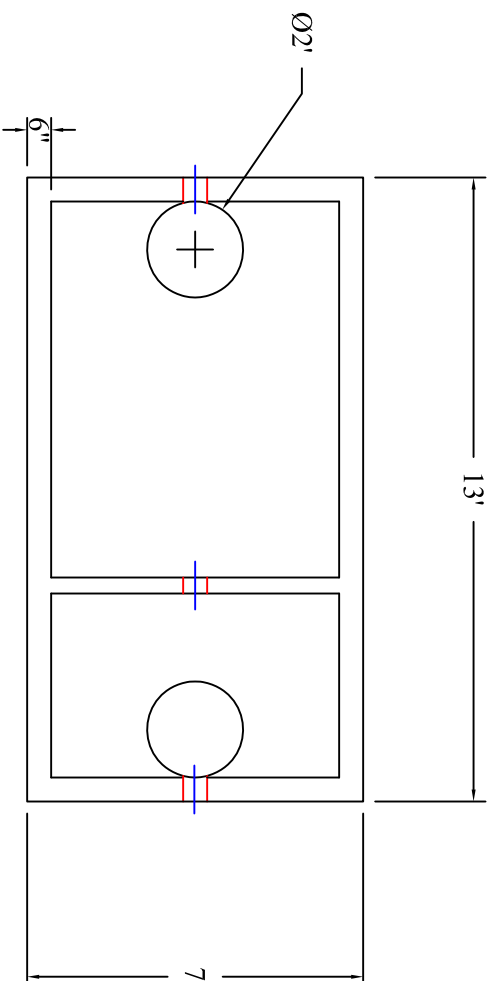
INLET & OUTLET BOOT MEETS
ASTM C 923, ACCEPTS 4" & 6" PVC

BUTYL SEALANT: MEETS ASTM
C 900, USED ON JOINTS

ACCESS OPENING SUITABLE FOR
24" RISER AND/OR RING & COVER

INTERNAL PIPING BY OTHERS
PER MUNICIPAL SPECS

BAFFLE TO BE MONOLITHIC WITH
6" PVC CROSSOVER



Scale: 1/4" = 1'



**BARTOW
PRECAST**

770.382.4462
sales@bartowprecast.com
WWW.BARTOWPRECAST.COM



DRAWING INFORMATION

Drawn By: CBC
Checked By: 1
Revision: 11/29/16
Date:

APPROVED BY:

print: _____

sign: _____

*actual dimensions may vary slightly