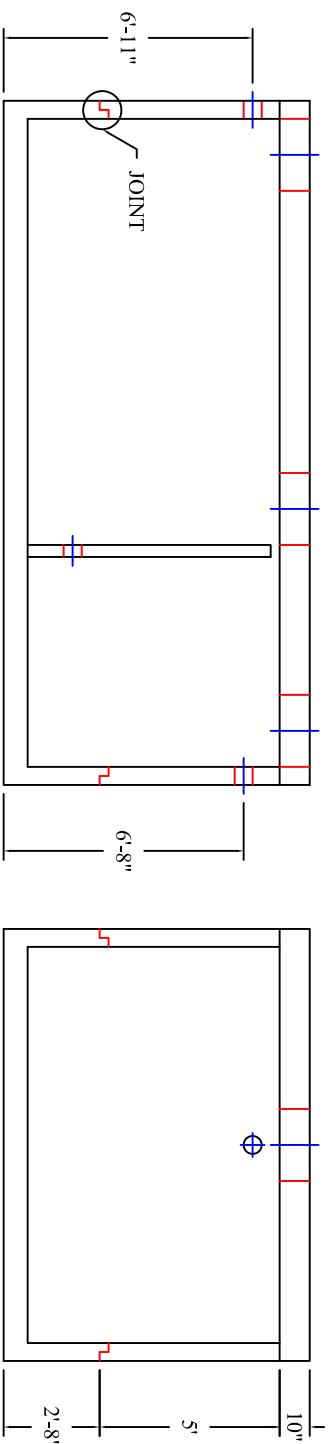
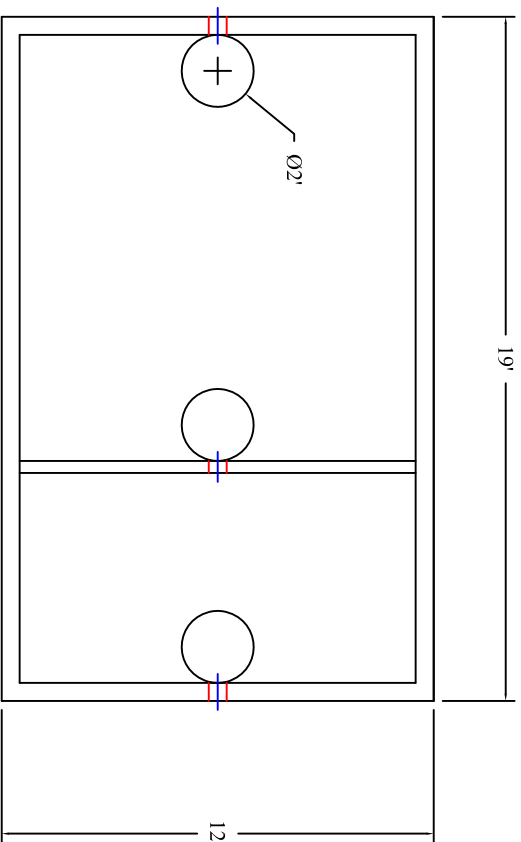


# GREASE INTERCEPTOR 8,500 GALLON CAPACITY



Scale: 3/16" = 1'



**BARTOW  
PRECAST**

**770.382.4462**  
sales@bartowprecast.com  
WWW.BARTOWPRECAST.COM

MODEL: GI 8500 / 181

**PRODUCT INFORMATION**  
8,500 GALLON  
GREASE INTERCEPTOR

BASE= 31,800 # RISER= 22,500 #  
LID= 26,850 # BAFFLE= 3,650 #  
DESIGN MAY VARY

**SPECIFICATIONS**  
MEETS ASTM C 1613

RATING: A-16 (H-20), ASSUME  
4" MAX EARTH COVER WITH 3"  
WATER TABLE BELOW GRADE

CONCRETE: 5,000 PSI @ 28 DAYS  
STEEL REINFORCEMENT: MEETS  
ASTM A 615, PLACEMENT AS  
REQUIRED BY DESIGN

INLET & OUTLET BOOT MEETS  
ASTM C 923, ACCEPTS 4" & 6" PVC  
BUTYL SEALANT: MEETS ASTM  
C 900, USED ON JOINTS

ACCESS OPENING SUITABLE FOR  
24" RISER AND/OR RING & COVER

INTERNAL PIPING BY OTHERS  
PER MUNICIPAL SPECS

MODIFICATION TO THIS DESIGN  
AVAILABLE UPON REQUEST

CALL FOR ADDITIONAL SPECS



**DRAWING INFORMATION**

Drawn By: CBC  
Checked By: 1  
Revision: 2/6/17  
Date: 2/6/17

APPROVED BY: \_\_\_\_\_

print: \_\_\_\_\_

sign: \_\_\_\_\_

\*actual dimensions may vary slightly