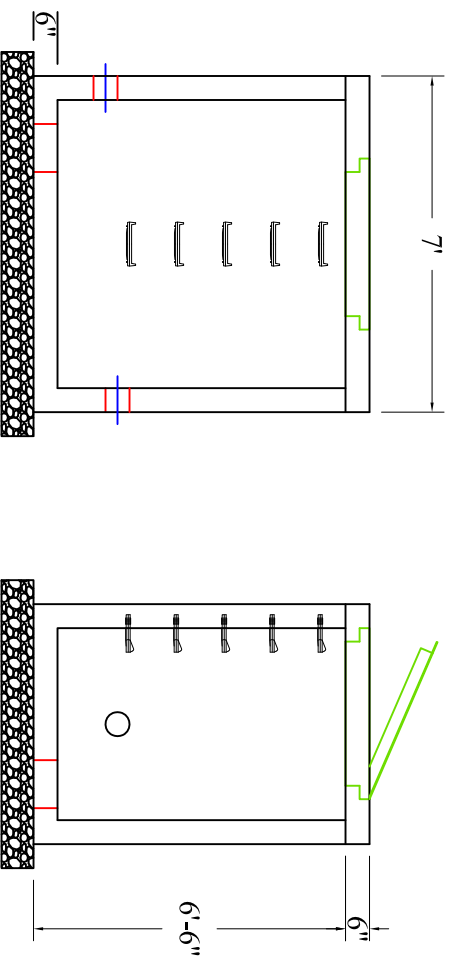
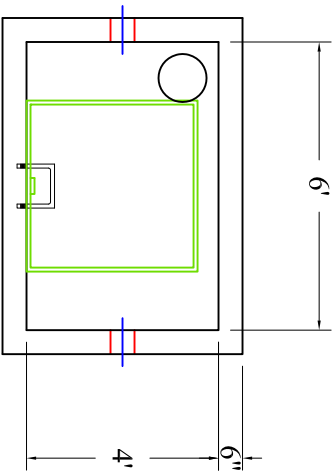


6'x4'x6' (ID) Vault with Floor



SS120-60604 F
L0705-3636

PRODUCT INFORMATION

6'x4'x6' (ID)

UTILITY VAULT

Vault = 12,400 #

Lid = 2,000 #

*design may vary

SPECIFICATIONS

MEETS ASTM C858 & C857

RATING: NON-TRAFFIC

CONCRETE TO BE 4,000 PSI
@ 28 DAYS

REINFORCING STEEL MEETS
ASTM A 615

10" STEPS ON 12" CENTERS

BUTYL SEALANT MEETING ASTM
C 990 TO BE USED ON JOINTS

ACCESS HATCH SHALL BE
FABRICATED WITH 1/4"
ALUMINUM DIAMOND PLATE
DESIGNED TO SUPPORT 300 psf
36"x36" FRAME OPENING
EQUIPPED WITH: SLAM LOCK,
FLUSH MOUNT LIFT HANDLE,
HOLD-OPEN ARM, SS HARDWARE
AND HINGES

PENETRATIONS SIZE AND
LOCATION VARY PER JOB
CALL FOR ADDITIONAL SPECS



DRAWING INFORMATION

Drawn By: JIG

Checked By: ARL

Revision: 1

Date: 6/16/2025

APPROVED BY:

print: _____

sign: _____

*actual dimensions may vary slightly



**BARTOW
PRECAST**

770.382.4462
sales@bartowprecast.com
WWW.BARTOWPRECAST.COM

Scale: 1/4" = 1'