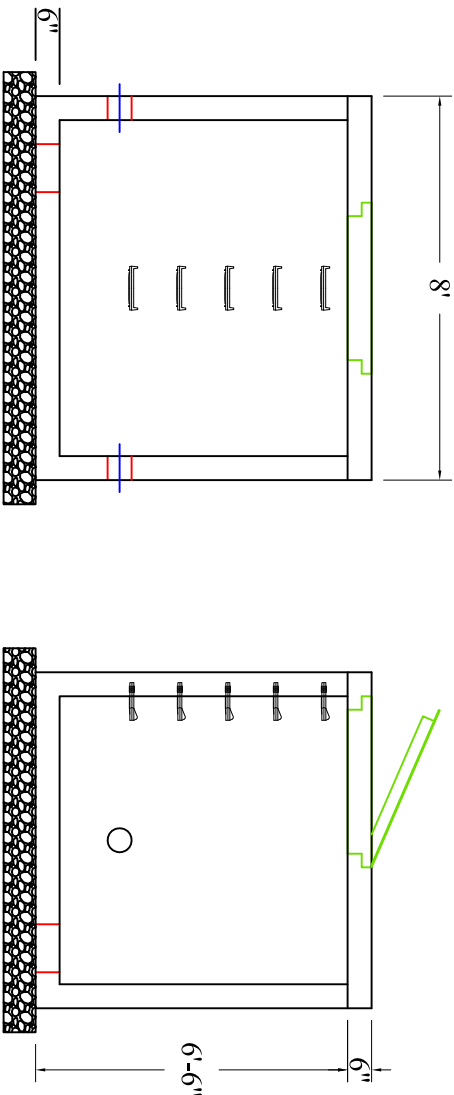
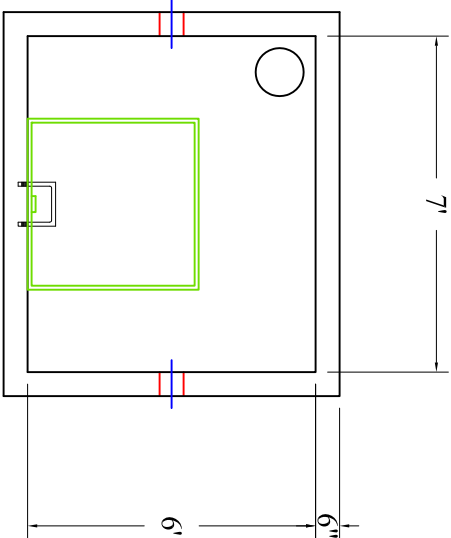


7'x6'x6' (ID) Vault with Floor



Scale: 1/4" = 1'



**BARTOW**  
PRECAST

770.382.4462  
sales@bartowprecast.com  
WWW.BARTOWPRECAST.COM

SS120-60706 F  
L0807-3636

PRODUCT INFORMATION

7'x6'x6' (ID)  
UTILITY VAULT

Vault = 16,600 #

Lid = 3,500 #

\*design may vary

SPECIFICATIONS

MEETS ASTM C858 & C857

RATING: NON-TRAFFIC

CONCRETE TO BE 4,000 PSI  
@ 28 DAYS

REINFORCING STEEL MEETS  
ASTM A 615

10" STEPS ON 12" CENTERS

BUTYL SEALANT MEETING ASTM  
C 990 TO BE USED ON JOINTS

ACCESS HATCH SHALL BE  
FABRICATED WITH 1/4"  
ALUMINUM DIAMOND PLATE  
DESIGNED TO SUPPORT 300 psf  
36"x36" FRAME OPENING  
EQUIPPED WITH: SLAM LOCK,  
FLUSH MOUNT LIFT HANDLE,  
HOLD-OPEN ARM, SS HARDWARE  
AND HINGES

PENETRATIONS SIZE AND  
LOCATION VARY PER JOB  
CALL FOR ADDITIONAL SPECS



DRAWING INFORMATION

Drawn By: JJG

Checked By: ARL

Revision: 1

Date: 6/16/2025

APPROVED BY:

print: \_\_\_\_\_

sign: \_\_\_\_\_

\*actual dimensions may vary slightly