

9'x4'x5' (ID) Vault

SS120-50904
L1005-3636

PRODUCT INFORMATION

9'x4'x5' (ID)

UTILITY VAULT

Vault = 10,500 #

Lid = 3,100 #

*design may vary

SPECIFICATIONS

MEETS ASTM C858 & C857

RATING: NON-TRAFFIC

CONCRETE TO BE 4,000 PSI
@ 28 DAYS

REINFORCING STEEL MEETS
ASTM A 615

10" STEPS ON 12" CENTERS

BUTYL SEALANT MEETING ASTM
C 990 TO BE USED ON JOINTS

ACCESS HATCH SHALL BE
FABRICATED WITH 1/4"
ALUMINUM DIAMOND PLATE
DESIGNED TO SUPPORT 300 psf
36"x36" FRAME OPENING
EQUIPPED WITH: SLAM LOCK,
FLUSH MOUNT LIFT HANDLE,
HOLD-OPEN ARM, SS HARDWARE
AND HINGES

PENETRATIONS SIZE AND
LOCATION VARY PER JOB
CALL FOR ADDITIONAL SPECS



DRAWING INFORMATION

Drawn By: JJG

Checked By: ARL

Revision: 1

Date: 6/24/2025

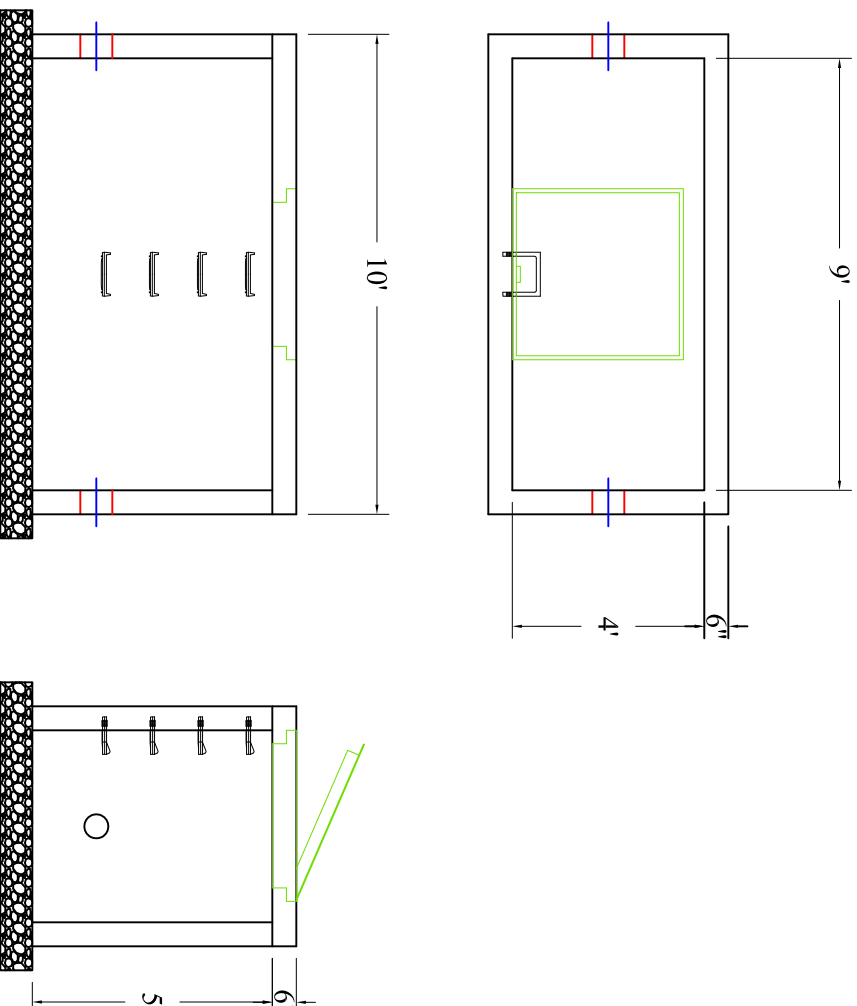
APPROVED BY:

print: _____

sign: _____

*actual dimensions may vary slightly

Scale: 1/4" = 1'



BARTOW
PRECAST

770.382.4462
sales@bartowprecast.com
WWW.BARTOWPRECAST.COM